

# CyberEdge<sup>®</sup>

Bridging the gap between cyber and traditional risk exposures

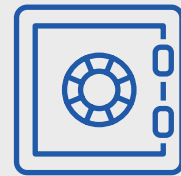
Disruption and financial losses resulting from a cyber-attack are a significant concern for most businesses, yet many still only buy traditional insurance for physical assets and liabilities. It has never been more important for modern, digitised businesses to build cyber resilience and consider the business impact in the event that their data or computer systems be compromised. The likelihood of the occurrence of a cyber-attack has increased significantly as external actors become more technologically advanced and financially or ideologically driven. Having a CyberEdge policy in addition to traditional types of insurance allows any business to manage current risks.

## CyberEdge will pay for critical costs incurred in a cyber incident



### Ransom Attacks

Payment to resolve an extortion threat as well as fees to hire specialist extortion advisors.



### Data Protection & Regulatory Obligations

Investigation costs, fines, and penalties from a privacy regulatory investigation.



### Third Party Liability

Defence costs and damages for claims arising from failure of computer security and disclosure of private information.



### Loss of Profit & Extra Expense

Compensation for loss of profit as a result of system and/or data interruption



### 24/7 Cyber Breach Resolution Team

Most critically, you will need experts to help respond to your cyber incident.

### Forensic Services

Helps determine what has happened.

### IT Services

Restoring, collecting, and recreating data.

### Legal Services

Legal services to understand obligations and defend legal proceedings.

### Public Relations Services

Reputation and recovery initiatives such as crisis communication strategies.

CyberEdge assists clients to quickly respond to an incident and manage the event from breach through to resolution.



### 24/7 Cyber Breach Resolution Team

24/7 breach response hotline

Manage unfolding events and quickly respond to enquiries

Local presence supported by global resources



### Insurance Coverage

Pays for the cyber breach resolution team

Pays for defence costs and damages from third party claims

Pays for privacy regulator investigations

Pays for business interruption losses



### Claims Service

20 years experience in cyber-related claims

Ready to assist as soon as you suspect a potential breach

Works closely with you and the cyber breach resolution team to make quick decisions

Cyber risk does not discriminate, that is why CyberEdge has been designed for broad application across many sectors. Our target industries include:



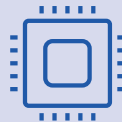
**Wholesale and Retail business**



**Manufacturing**



**Food and Beverage**



**Technology and Media**



**Real Estate**



**Education**



**Professional Firms**

Industries mentioned are by way of example. Please contact AIG to enquire about other businesses within our appetite.

## Why AIG



### Market leader

AIG was the first to offer cyber insurance globally in 1999.



We insure a wide variety of **publicly listed companies, private corporations, non-profit organisations and SMEs** across various industries.



In 2016, AIG insured **22,000** commercial clients against cyber-related risks and **22 million** individuals against identity theft globally.



We have a **global footprint** serving clients in over 200 countries and jurisdictions. This includes AIG affiliate insurers and third party network partner insurers.



This document is provided as a general overview of the subject matter and should not be taken as providing any specific advice, legal or otherwise. AIG is the marketing name for the worldwide property-casualty, life and retirement, and general insurance operations of American International Group, Inc. Products and services are written or provided by subsidiaries, affiliates or partners of American International Group, Inc. Products or services may not be available in all countries, and coverage is subject to actual policy language. For additional information, please visit our websites at [www.aig.com](http://www.aig.com) and [www.aig.co.nz](http://www.aig.co.nz)

©AIG – all rights reserved

NZCyberEdge112018

## CONTACT

AIG Insurance New Zealand Limited

The AIG Building, Level 19  
41 Shortland Street  
P.O. Box 1745  
Auckland 1140  
New Zealand

Tel: +64 9 355 3100